



Simple, Rapid 5-Part Differential CBC at the Oncology Clinic

Enhance workflow efficiency

The **HemoScreen** is ideal for use at oncology and hemato-oncology clinics providing a 5-part differential, platelets count and Hb within 6 minutes in an extremely simple apparatus. The HemoScreen requires no training, maintenance or calibration and can therefore be operated by virtually anyone.

The HemoScreen enables oncologists to determine patient's readiness for chemotherapy without delay reducing turn-around-time and entailed costs. It also facilitates real-time blood components transfusion management.

Due to the innovative machine vision technology, the HemoScreen is able to detect abnormal cells including Immature Granulocytes, Blasts and Nucleated RBCs, all early indicators of infection or inflammation. This provides a valuable tool for physicians to conclude diagnosis or order further testing.

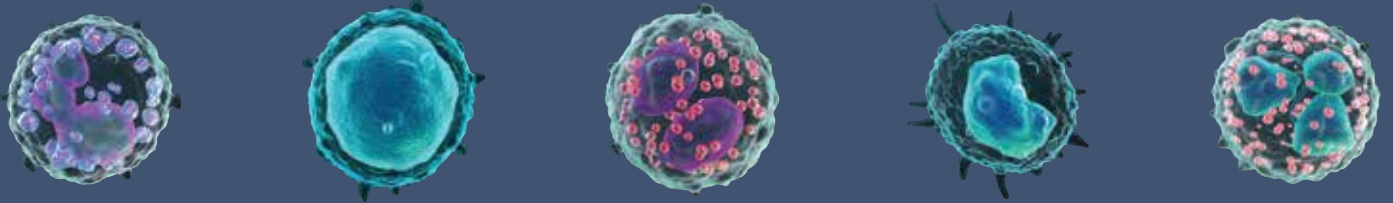
Product description

The **HemoScreen** is a miniature, portable Hematology analyzer which uses disposable cartridges.

Each cartridge includes all necessary reagents, after accepting the blood sample, both reagents and sample remain safely sealed within the cartridge.

The procedure is fully automatic, requiring no training, maintenance or calibration.

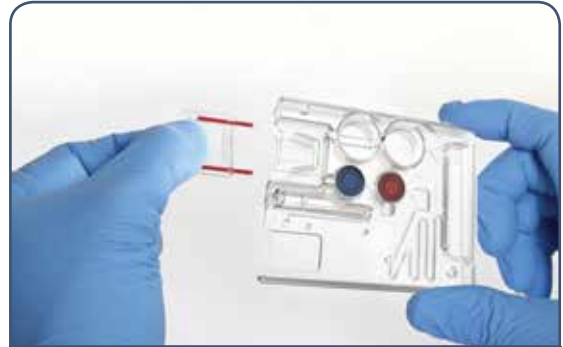
Exceptionally fast	3 simple steps from sample to results in 6 minutes.
Exceptionally simple	Fully automated. No training is required. No maintenance or Calibration.
Exceptionally accurate	Breakthrough Technology ensures lab accurate results. Accuracy and precision comparable to large expensive lab analyzers.



Three Simple Steps from Sample to Results



1. Sampling




2. Insertion into cartridge



3. Insertion into reader



4. Results

CE  See instructions for use

 **PixCell Medical Ltd.**

6th Hayezira St., POB 113 Yokneam Illit, Israel

Office: +972-4-959-3516 | Fax: +972-4-959-3518 | Mail: info@pixcell-medical.com

EU Authorized Representative CEpartner4U BV

Esdoornlaan 13 3951 DB Maarn, The Netherlands | Mail: office@CEpartner4U.com

Phone: +31-343-442.524 | Fax: +31-343-442.162 | Mobile: +31-6-516-536.26

PixCell
MEDICAL

www.pixcell-medical.com