



# Simple, Rapid Hematology at Primary Care

## Diagnose and treat at a single visit

The **HemoScreen** is the first miniature, easy-to-use hematology analyzer that provides a full 5-part differential Complete Blood Count within 5 minutes.

The HemoScreen is specifically designed to be operated at the physician's office as it requires no training, maintenance or calibration. It offers the physician a unique opportunity to provide better service to his patients and to make more substantiated decisions such as prescribing antibiotics, referring patients to the ER and ordering specific tests.

In spite of its small size and simple operation, the HemoScreen delivers lab accurate results, maintaining quality without compromise.

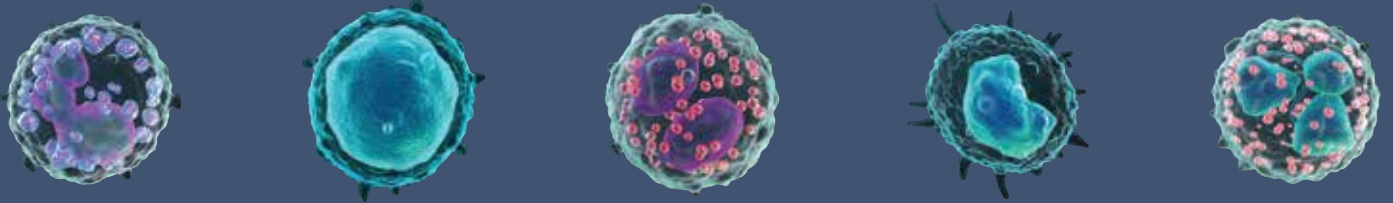
## Product description

The **HemoScreen** is a miniature, portable Hematology analyzer which uses disposable cartridges.

Each cartridge includes all necessary reagents, after accepting the blood sample, both reagents and sample remain safely sealed within the cartridge.

The procedure is fully automatic, requiring no training, maintenance or calibration.

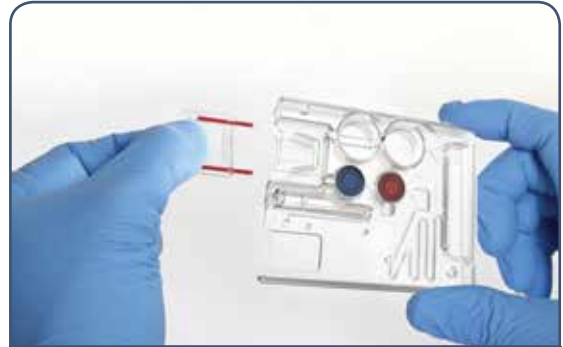
Exceptionally fast	3 simple steps from sample to results in 6 minutes.
Exceptionally simple	Fully automated. No training is required. No maintenance or calibration.
Exceptionally accurate	Breakthrough technology ensures lab accurate results. Accuracy and precision comparable to large expensive lab analyzers.



## Three Simple Steps from Sample to Results



1. Sampling



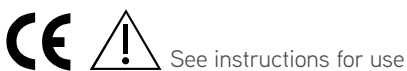
2. Insertion into cartridge



3. Insertion into reader



4. Results



**PixCell Medical Ltd.**

6<sup>th</sup> Hayezira St., POB 113 Yokneam Illit, Israel  
 Office: +972-4-959-3516 | Fax: +972-4-959-3518 | Mail: info@pixcell-medical.com

**EU Authorized Representative CEpartner4U BV**

Esdoornlaan 13 3951 DB Maarn, The Netherlands | Mail: office@CEpartner4U.com  
 Phone: +31-343-442.524 | Fax: +31-343-442.162 | Mobile: +31-6-516-536.26

[www.pixcell-medical.com](http://www.pixcell-medical.com)

**PixCell**  
 MEDICAL